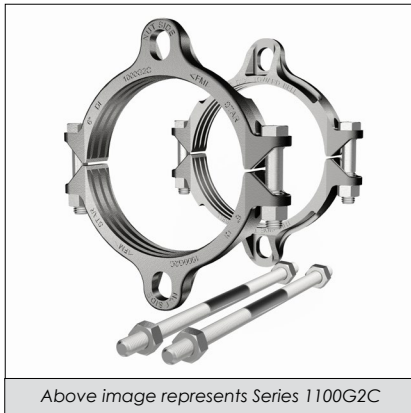




Pipe Restrainers series 1000G2 & 1100G2

1000G2C & 1100G2C For Use On Ductile Iron Pipe



Above image represents Series 1100G2C

SUBMITTAL INFORMATION

PROJECT NAME:

ENGINEER:

CONTRACTOR:

SPEC. SECTION:



FEATURES & ADVANTAGES

- Castings made of Ductile Iron - ASTM A536, Grade 65-45-12
- Restrainers work with Mechanical Joint or Ductile Iron Push-On Fittings and with Ductile Iron Pipe manufactured per ANSI/AWWA C-151/A21.51.
- All restrainers are machined to exact tolerances
- The safety factor is twice (2:1) the maximum pressure rating listed below.
- Maintains full deflection on Mechanical Joint and Push-On Fittings
- T-Bolts/Rods/Hex Nuts: Low alloy steel per ANSI/AWWA C111/A21.11
- Clamping Bolts: SAE J429 Grade 5

MATERIAL SPECIFICATIONS:

- Restraint Castings: Ductile Iron per ASTM A536, Grade 65-45-12

RESTRAINT CASTINGS FINISH OPTIONS (Please check one):

- Standard: alkyd enamel coating
- Optional: Starbond™ TGIC polyester powder coating applied by an electrostatic spray process
- Optional: Other (specify) _____

COUNTRY OF ORIGIN OPTION (Please check one):

- Import
- Domestic

HARDWARE OPTIONS (Please check one):

STANDARD:

- Clamp Bolt: SAE J429 Grade 5
- Clamp Nut: SAE J995 Grade 2 or ASTM A563 Grade "A" or "B"
- Restraint Bolt/Rod/Nut: High strength low alloy steel per ANSI/AWWA C111/A21.11
- Washer: carbon steel per ASTM F844

OPTIONAL SS ALLOY 304:

- Clamp Bolt: SS alloy 304 per ASTM A193 Grade B8, Class 2
- Clamp Nut: SS alloy 304 per ASTM A194 Grade 8, S1
- Restraint Bolt/Rod: SS alloy 304 per ASTM F593 CW
- Restraint Nut: SS alloy 304 per ASTM F594 CW
- Washer: SS alloy 304

OPTIONAL SS ALLOY 316:

- Clamp Bolt: SS alloy 316 per ASTM A193 Grade B8M, Class 2
- Clamp Nut: SS alloy 316 per ASTM A194 Grade 8M, S1
- Restraint Bolt/Rod: SS alloy 316 per ASTM F593 CW
- Restraint Nut: SS alloy 316 per ASTM F594 CW
- Washer: SS alloy 316

OPTIONAL STAR BLUE:

- Clamp Bolt: Fluoropolymer Star Blue coated SAE J429 Grade 5
- Clamp Nut: Fluoropolymer Star Blue coated SAE J995 Grade 2 or ASTM A563 Grade "A" or "B"
- Restraint Bolt/Rod/Nut: Fluoropolymer Star Blue coated high strength low alloy steel per ANSI/AWWA C111/A21.11
- Washer: Fluoropolymer Star Blue coated carbon steel per ASTM F844

STAR® PIPE PRODUCTS

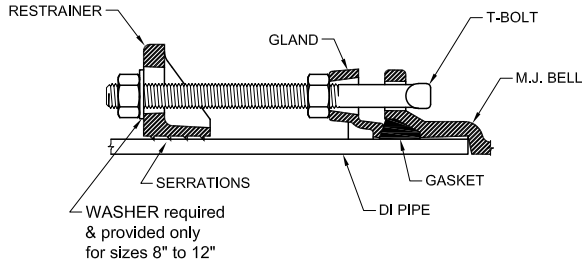




Pipe Restrainers series 1000G2 & 1100G2

1000G2C & 1100G2C For Use On Ductile Iron Pipe

TECHNICAL INFORMATION



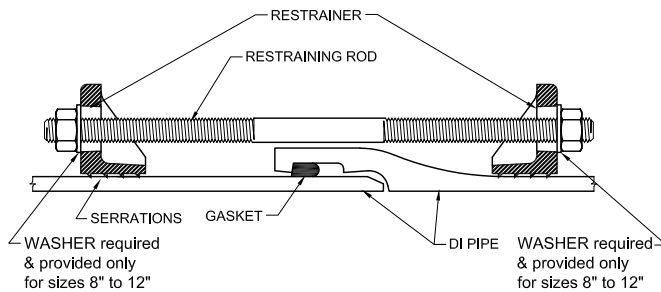
Series 1000G2

4" - 12" Sizes with MJ Fittings

Please check sizes:

Pressure Ratings For Ductile Iron Pipe to MJ Fitting Connections.

NOMINAL SIZE	MAXIMUM PRESSURE RATINGS (PSI)	CLAMP BOLT TORQUE (FT-LBS)
4"	250	110
6"	250	110
8"	250	110
10"	250	110
12"	200	130



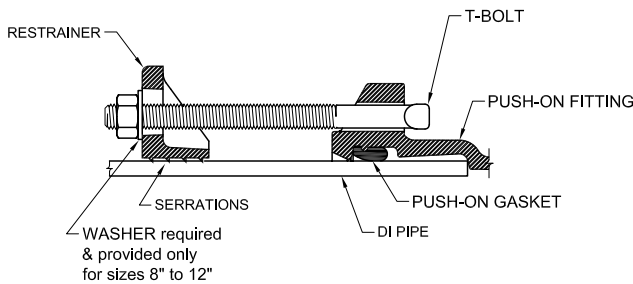
Series 1100G2

4"-12" Sizes with Pipe to Pipe Connection

Please check sizes:

Pressure Ratings For Ductile Iron Pipe-to-Pipe Connections.

NOMINAL SIZE	MAXIMUM PRESSURE RATINGS (PSI)	CLAMP BOLT TORQUE (FT-LBS)
4"	250	110
6"	250	110
8"	250	110
10"	250	110
12"	200	130



Series 1000G2

4" - 12" Sizes with Push-On Fittings

Please check sizes:

Pressure Ratings For DI Pipe to Ductile Iron Push-On Fitting Connections.

NOMINAL SIZE	MAXIMUM PRESSURE RATINGS (PSI)	CLAMP BOLT TORQUE (FT-LBS)
4"	250	110
6"	250	110
8"	250	110
10"	100	110
12"	100	130

STAR[®] PIPE PRODUCTS