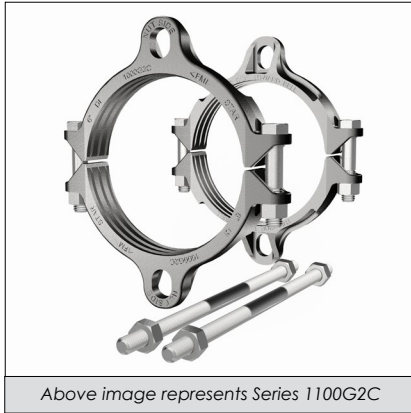




# Pipe Restrainers series 1000G2 & 1100G2

1000G2C & 1100G2C For Use On Ductile Iron Pipe



Above image represents Series 1100G2C

### SUBMITTAL INFORMATION

PROJECT NAME:

ENGINEER:

CONTRACTOR:

SPEC. SECTION:



### FEATURES & ADVANTAGES

- Castings made of Ductile Iron - ASTM A536, Grade 65-45-12
- Restrainers work with Mechanical Joint or Ductile Iron Push-On Fittings and with Ductile Iron Pipe manufactured per ANSI/AWWA C-151/A21.51.
- All restrainers are machined to exact tolerances
- The safety factor is twice (2:1) the maximum pressure rating listed below.
- Maintains full deflection on Mechanical Joint and Push-On Fittings
- T-Bolts/Rods/Hex Nuts: Low alloy steel per ANSI/AWWA C111/A21.11
- Clamping Bolts: SAE J429 Grade 5

### MATERIAL SPECIFICATIONS:

- Restraint Castings: Ductile Iron per ASTM A536, Grade 65-45-12

### RESTRAINT CASTINGS FINISH OPTIONS (Please check one):

Standard: alkyd enamel coating

Optional: Starbond™ TGIC polyester powder coating applied by an electrostatic spray process

Optional: Other (specify) \_\_\_\_\_

### COUNTRY OF ORIGIN OPTION (Please check one):

Import

Domestic

### HARDWARE OPTIONS (Please check one):

#### STANDARD:

- Clamp Bolt: SAE J429 Grade 5
- Clamp Nut: SAE J995 Grade 2 or ASTM A563 Grade "A" or "B"
- Restraint Bolt/Rod/Nut: High strength low alloy steel per ANSI/AWWA C111/A21.11
- Washer: carbon steel per ASTM F844

#### OPTIONAL SS ALLOY 304:

- Clamp Bolt: SS alloy 304 per ASTM A193 Grade B8, Class 2
- Clamp Nut: SS alloy 304 per ASTM A194 Grade 8, S1
- Restraint Bolt/Rod: SS alloy 304 per ASTM F593 CW
- Restraint Nut: SS alloy 304 per ASTM F594 CW
- Washer: SS alloy 304

#### OPTIONAL SS ALLOY 316:

- Clamp Bolt: SS alloy 316 per ASTM A193 Grade B8M, Class 2
- Clamp Nut: SS alloy 316 per ASTM A194 Grade 8M, S1
- Restraint Bolt/Rod: SS alloy 316 per ASTM F593 CW
- Restraint Nut: SS alloy 316 per ASTM F594 CW
- Washer: SS alloy 316

#### OPTIONAL STAR BLUE:

- Clamp Bolt: Fluoropolymer Star Blue coated SAE J429 Grade 5
- Clamp Nut: Fluoropolymer Star Blue coated SAE J995 Grade 2 or ASTM A563 Grade "A" or "B"
- Restraint Bolt/Rod/Nut: Fluoropolymer Star Blue coated high strength low alloy steel per ANSI/AWWA C111/A21.11
- Washer: Fluoropolymer Star Blue coated carbon steel per ASTM F844

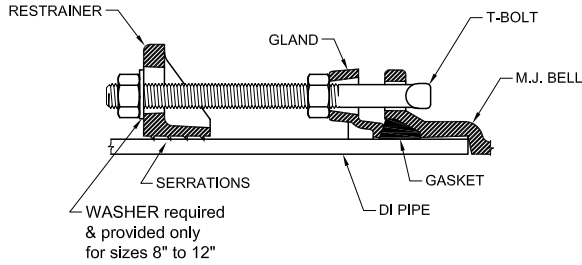
STAR® PIPE PRODUCTS



# Pipe Restrainers series 1000G2 & 1100G2

1000G2C & 1100G2C For Use On Ductile Iron Pipe

## TECHNICAL INFORMATION



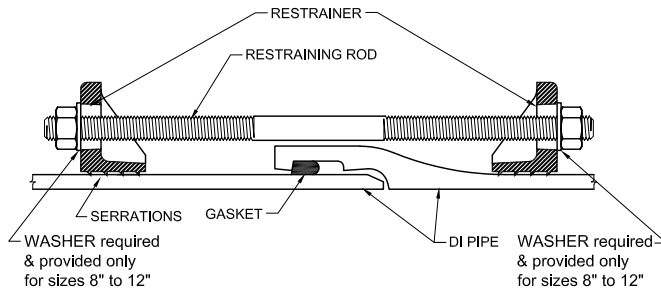
**Series 1000G2**

4" - 12" Sizes with MJ Fittings

*Please check sizes:*

### Pressure Ratings For Ductile Iron Pipe to MJ Fitting Connections.

NOMINAL SIZE	MAXIMUM PRESSURE RATINGS (PSI)	CLAMP BOLT TORQUE (FT-LBS)
4"	250	110
6"	250	110
8"	250	110
10"	250	110
12"	200	110



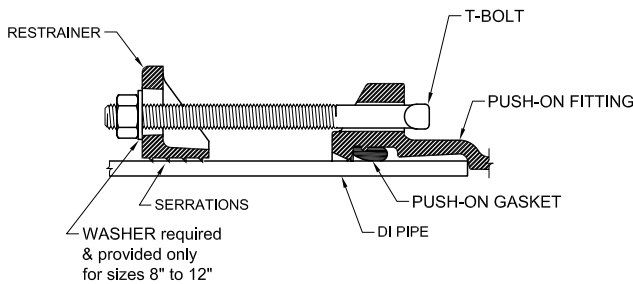
**Series 1100G2**

4"-12" Sizes with Pipe to Pipe Connection

*Please check sizes:*

### Pressure Ratings For Ductile Iron Pipe-to-Pipe Connections.

NOMINAL SIZE	MAXIMUM PRESSURE RATINGS (PSI)	CLAMP BOLT TORQUE (FT-LBS)
4"	250	110
6"	250	110
8"	250	110
10"	250	110
12"	200	110



**Series 1000G2**

4" - 12" Sizes with Push-On Fittings

*Please check sizes:*

### Pressure Ratings For DI Pipe to Ductile Iron Push-On Fitting Connections.

NOMINAL SIZE	MAXIMUM PRESSURE RATINGS (PSI)	CLAMP BOLT TORQUE (FT-LBS)
4"	250	110
6"	250	110
8"	250	110
10"	100	110
12"	100	110

STAR<sup>®</sup> PIPE PRODUCTS