



Domestic Ductile Iron Flanged Fittings

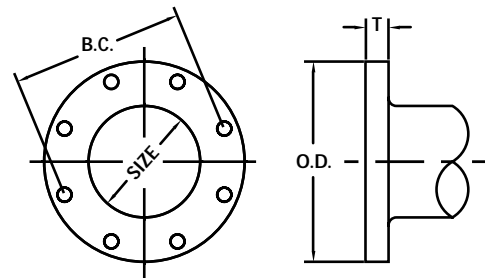
ANSI/AWWA C110/A21.10

GENERAL SPECIFICATIONS

MATERIAL:	Ductile iron per ASTM A536
PRESSURE:	250 PSI rating for 1" - 48" sizes and 150 PSI rating for 54" - 64"
TESTING:	In accordance with ANSI/AWWA C110/A21.10, UL and FM requirements
LAYING LENGTH:	2" - 48" sizes in accordance with ANSI/AWWA C110/A21.10 and ANSI B16.1 and 54" - 64" sizes in accordance with ANSI/AWWA C153/A21.53 (fittings not listed in ANSI/AWWA have dimensions per Star design as noted in the catalog)
WEIGHTS:	Are in pounds, unless noted otherwise and do not include accessories, cement lining and coatings
DRILLING:	In accordance with ANSI/AWWA C110/A21.10, ANSI/AWWA C153/A21.53 and ANSI B16.1 Class 125 Flanges
CEMENT LINING:	In accordance with ANSI/AWWA C104/A21.4 -- sizes 1" - 3" single thickness and sizes 4" - 64" double thickness
COATING:	Asphaltic seal coat inside in accordance with ANSI/AWWA C104/A21.4 and prime coat outside
APPROVALS:	2" - 12" Underwriters Laboratories and ULC Listed and Factory Mutual approved for 300 PSI rating. Please consult factory for detail listing and approvals. 2" and greater are UL/NSF-61.
DIMENSIONS:	All dimensions are in inches unless noted otherwise.
INSTALLATION:	Per ANSI/AWWA C110 and C111



SUBMITTAL INFORMATION	
PROJECT NAME:	<input type="text"/>
ENGINEER:	<input type="text"/>
CONTRACTOR:	<input type="text"/>
SPEC. SECTION:	<input type="text"/>



NOM. SIZE	O.D.	B.C.	T	BOLT HOLE DIA.	BOLTS	
					SIZE	NO.
1	4.25	3.12	0.44	0.62	1/2 x 2	4
1 1/2	5.00	3.88	0.56	0.62	1/2 x 2	4
2	6.00	4.75	0.62	0.75	5/8 x 2 1/4	4
2 1/2	7.00	5.50	0.69	0.75	5/8 x 2 1/2	4
3	7.50	6.00	0.75	0.75	5/8 x 2 1/2	4
4	9.00	7.50	0.94	0.75	5/8 x 3	8
5	10.00	8.50	0.94	0.88	3/4 x 3	8
6	11.00	9.50	1.00	0.88	3/4 x 3 1/2	8
8	13.50	11.75	1.12	0.88	3/4 x 3 1/2	8
10	16.00	14.25	1.19	1.00	7/8 x 4	12
12	19.00	17.00	1.25	1.00	7/8 x 4	12
14	21.00	18.75	1.38	1.13	1 x 4 1/2	12
16	23.50	21.25	1.44	1.13	1 x 4 1/2	16
18	25.00	22.75	1.56	1.25	1 1/8 x 5	16
20	27.50	25.00	1.69	1.25	1 1/8 x 5	20
24	32.00	29.50	1.88	1.38	1 1/4 x 5 1/2	20
30	38.75	36.00	2.12	1.38	1 1/4 x 6 1/2	28
36	46.00	42.75	2.38	1.63	1 1/2 x 7	32
42	53.00	49.50	2.62	1.63	1 1/2 x 7 1/2	36
48	59.50	56.00	2.75	1.63	1 1/2 x 8	44
54	66.25	62.75	3.00	2.00	1 3/4 x 8 1/2	44
60	73.00	69.25	3.12	2.00	1 3/4 x 9	52
64	80.00	76.00	3.38	2.00	1 3/4 x 9	52

SIZE RANGE (Please specify):

Size Range

LINING OPTIONS (Please check one):

- Standard: Cement-lined and asphalt seal coat per ANSI/AWWA C104/A21.4 and UL/NSF-61
- Optional: FBE (Fusion Bonded Epoxy) per ANSI/AWWA C116/A21.15 and UL/NSF-61 - ID & OD Only
- Optional: P401 (Protecto 401) Ceramic Epoxy - sewer applications only. Not NSF-61
- Optional: Other (specify)

COATING OPTIONS (Please check one):

- Standard: Red Prime Coat
- Optional: Asphaltic seal coat per ANSI/AWWA C104/A21.4
- Optional: FBE (Fusion Bonded Epoxy) per ANSI/AWWA C116/A21.15 and UL/NSF-61 - ID & OD Only
- Optional: Other (specify)

