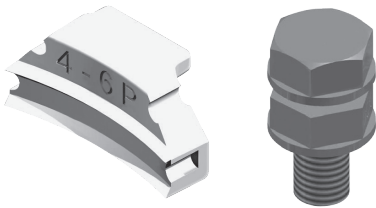


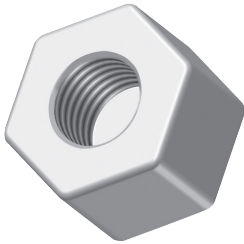
STARGRIP® Bolt, Nut and Wedge

NOM SIZE	ITEM CODE	CRT QTY	WT	PRICE
4 - 16	SGDPBOLT	2000	0.8	\$8.25
18 - 20	SGDPBOLTM	2000	0.8	9.50
24 - 36	SGDPBOLTL	2000	1.8	16.25
42 - 48	SGDPBOLTXL	1000	3	25.75



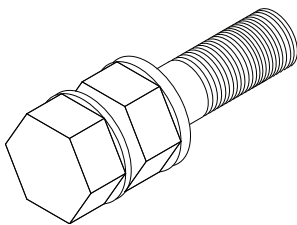
PVC STARGRIP® Bolt and Wedge

NOM SIZE	ITEM CODE	CRT QTY	WT	PRICE
3 - 12	PVCBOLT	2000	0.6	\$6.75
14 - 36	PVCBOLT2	2000	0.6	8.25
3	PVCWG01P	2000	0.2	4.25
4 - 6	PVCWG02P	2000	0.2	4.25
8 - 10	PVCWG03P	2000	0.5	5.50
12	PVCWG04P	2000	0.5	6.75
14 - 16	PVCWG04	2000	0.7	12.25
18 - 24	PVCWG05	2000	0.9	15.00
30 - 36	PVCWG06	2000	1.0	20.00



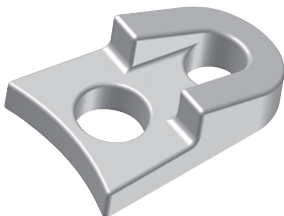
ZINC ANODE NUT

NOM SIZE	ITEM CODE	CRT QTY	WT	PRICE
3/4	ANODE6OZ	2000	0.4	\$8.25



PVC Ring Lock (PVCGRIP™) TORQUE - OFF BOLTS

NOM SIZE	ITEM CODE	CRT QTY	WT	PRICE
4 - 10	AGBOLTC	2000	0.75	\$9.50
12 - 16	AGBOLT12CS	2000	0.8	11.00



STARLUG (or Duc-Lug®) - Mechanical Joint Threaded-Rod Restraint System

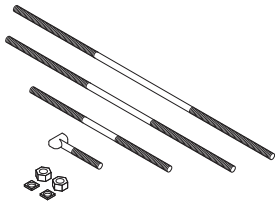
NOM SIZE	ITEM CODE	CRT QTY	WT	PRICE
4 - 16	STARLUG	2000	0.8	\$4.25

®Duc-Lug is a registered trademark of Astral Corporation.



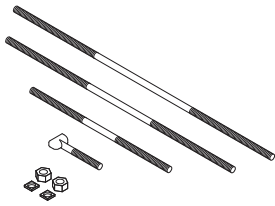


RESTRAINER HARDWARE
Connecting Rods For Series 1000,1100, 1200 Restrainers



DESCRIPTION	CODE	WT	PRICE
3/4"x7" T-BOLT WITH NUT	BOLTCS70	1.1	\$8.25
3/4"x9" T-BOLT WITH NUT	BOLTCS90	1.4	11.00
3/4"x12" DOUBLE-ENDED ROD	BOLTROD12	1.6	15.75
3/4"x17" DOUBLE-ENDED ROD	BOLTROD17	2.1	17.75
3/4"x24" DOUBLE-ENDED ROD	BOLTROD24	2.8	21.75
3/4"x30" DOUBLE-ENDED ROD	BOLTROD30	3.4	24.50
3/4"x36" DOUBLE-ENDED ROD	BOLTROD36	4	27.00
1"x24" DOUBLE-ENDED ROD	BOLTROD1X24	5.2	38.50
1"x40" DOUBLE-ENDED ROD	BOLTROD1x40	7.3	47.25
1 1/4"x30" DOUBLE-ENDED ROD	BOLTROD1.25X30	10	65.00
1 1/4"x48" DOUBLE-ENDED ROD	BOLTROD1.25X48	15.8	119.00
3/4" HEX NUT	BOLTCSNUT	0.2	2.75
7/8" PLATE WASHER	WASHER7/8SQ	0.4	1.50
1" PLATE WASHER	WASHER 1SQ	0.4	2.75
1" HEX NUT	BOLTCS60NUT	0.4	5.50
1 1/4" HEX NUT	BOLTCS61NUT	0.8	6.50
1 1/4" PLATE WASHER	WASHER1.25SQ	0.4	4.25

RESTRAINER HARDWARE
Accessory packs For Series 1000,1100 Restrainers



NOM SIZE	DESCRIPTION	CODE	CRT QTY	WT	PRICE
14"	PRC HARDWARE KIT FOR 1000	PRC101416K	66	24	\$210.75
16"	PRC HARDWARE KIT FOR 1000	PRC101616K	66	24	238.75
18"	PRC HARDWARE KIT FOR 1000	PRC101818K	66	29	258.00
20"	PRC HARDWARE KIT FOR 1000	PRC102020K	40	50	453.75
24"	PRC HARDWARE KIT FOR 1000	PRC102424K	40	64	568.50
30" - 36"	PRC HARDWARE KIT FOR 1000	PRC103036K	24	109	1,047.75
14"	PRC HARDWARE KIT FOR 1100	PRC111416K	44	41	363.25
16"	PRC HARDWARE KIT FOR 1100	PRC111616K	44	41	412.75
18"	PRC HARDWARE KIT FOR 1100	PRC111818K	44	50	441.50
20"	PRC HARDWARE KIT FOR 1100	PRC112020K	24	79	784.50
24"	PRC HARDWARE KIT FOR 1100	PRC112424K	24	104	968.00
30" - 36"	PRC HARDWARE KIT FOR 1100	PRC113036K	24	187	1,783.50

PLEASE CALL:

...FOR SPECIAL COATINGS (INCLUDING STARBOND)	...FOR STAINLES STEEL & CORE BLUE ACCESSORIES
---	--

STAR[®] PIPE PRODUCTS



® REGISTERED TRADEMARK OF STAR PIPE PRODUCTS

STAR PIPE PRODUCTS
HOUSTON CORPORATE | TOLL FREE 1-800-999-3009 | FAX 281-558-9000
www.starpipeproducts.com