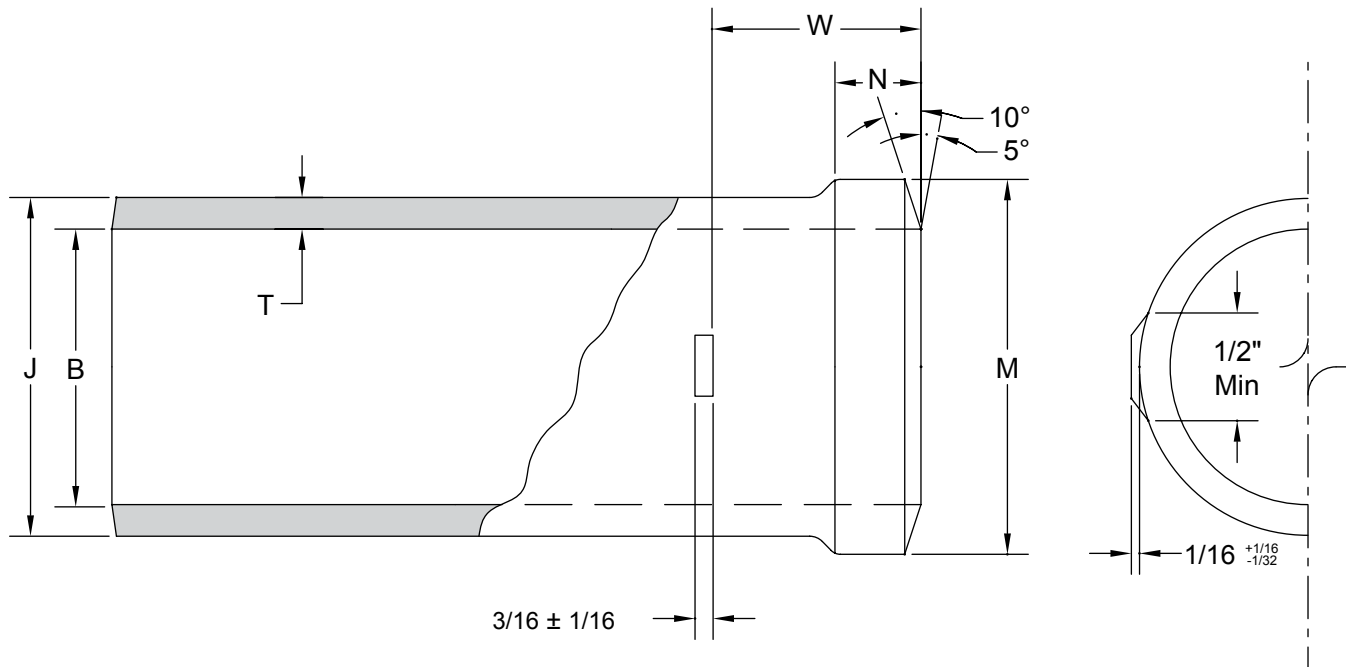




Details of Spigot Bead & Gasket Position Lug

TECHNICAL INFORMATION



SPIGOT BEAD & GASKET POSITION LUG*							
NOM. SIZE	INSIDE DIAMETER BARREL	OUTSIDE DIAMETER BARREL	OUTSIDE DIAMETER SPIGOT	WIDTH SPIGOT BEAD	THICKNESS OF BARREL		GASKET POSITIONING LUG
	B	J	M	N ± .13	T-NOM	T-MIN	W
1 1/2	1.50 ± 0.09	1.90 ± 0.06	1.96 ± 0.06	0.25	0.16	0.13	1.13
2	1.96 ± 0.09	2.35 ± 0.09	2.41 ± 0.09	0.25	0.16	0.13	1.13
3	2.96 ± 0.09	3.35 ± 0.09	3.41 ± 0.09	0.25	0.16	0.13	1.13
4	3.94 ± 0.09	4.38 + 0.09 / -0.05	4.44 ± 0.09	0.31	0.19	0.15	1.13
5	4.94 ± 0.09	5.30 + 0.09 / -0.05	5.36 ± 0.09	0.31	0.19	0.15	1.50
6	5.94 ± 0.09	6.30 + 0.09 / -0.05	6.36 ± 0.09	0.31	0.19	0.15	1.50
8	7.94 ± 0.13	8.38 ± 0.09	8.44 ± 0.09	0.31	0.23	0.17	2.00
10	10.00 ± 0.13	10.56 ± 0.09	10.62 ± 0.09	0.31	0.28	0.22	2.00
12	11.94 ± 0.13	12.50 ± 0.13	12.62 ± 0.13	0.31	0.28	0.22	2.75
15	15.11 ± 0.13	15.83 ± 0.13	16.12 ± 0.13	0.31	0.36	0.30	2.75

Note: All dimensions and tolerances are from ASTM A-888 and CISPI 301 Hubless Pipe & Fittings.
 *All dimensions in inches except where indicated.



STAR[®] PIPE PRODUCTS